

How to replace 1.4.3 mainboard with a 1.5.0 mainboard

Introduction

In September 2022, CHCNAV has stopped to produce the 1.4.3 mainboard which is used in the old PA-3 receiver with PN J1PA01430903080005, the company started to produce the 1.5.0 motherboard which is used in the new PA-3 receiver with PN J1PA01980102010005.

However, the structure between the 1.4.3 motherboard and the 1.5.0 motherboard structure is a little different, when change the 1.4.3 mainboard in a broken PA-3 receiver, it is necessary to put 5 tiny cushion column under the 1.5.0 mainboard. For more details, please check as below.

Prerequisite

1. Get an old PA-3 receiver with a broken 1.4.3 mainboard.



2. Get a new 1.5.0 mainboard.



3. 5 tiny cushion column.

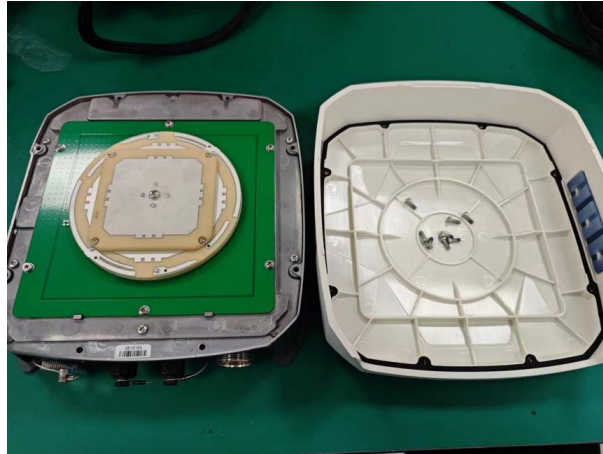


4. Tools that can help unscrew or screw the PA-3 receiver.



Steps

1. Unscrew the 8 screws at the PA-3 receiver bottom and remove the receiver cover.



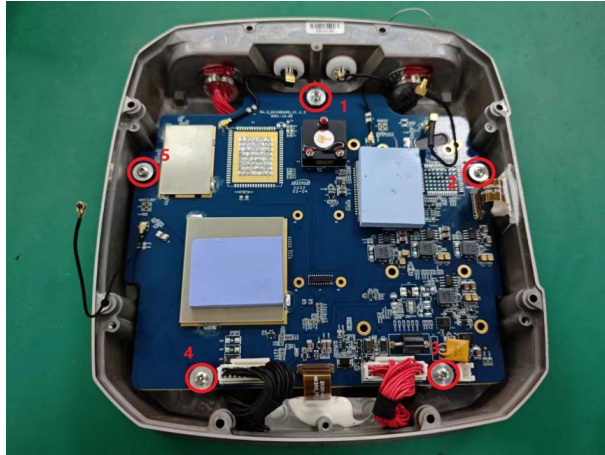
2. Unscrew the screws on the antenna and then take off the antenna.



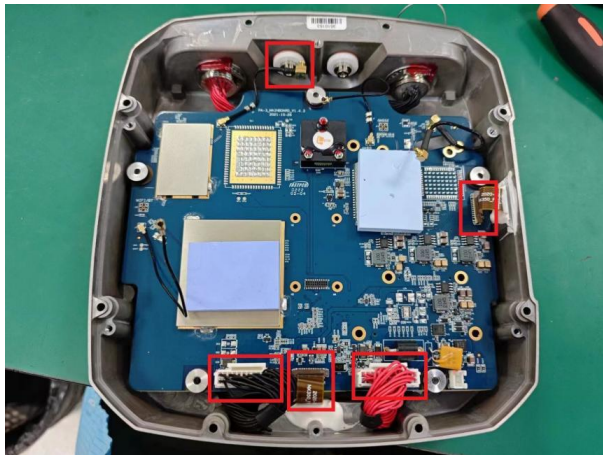
3. Remove the bracket to find the 1.4.3 mainboard.



4. Unscrew the 5 screws as shown in the picture below.



5. Plug off these connection as shown below in the picture carefully.



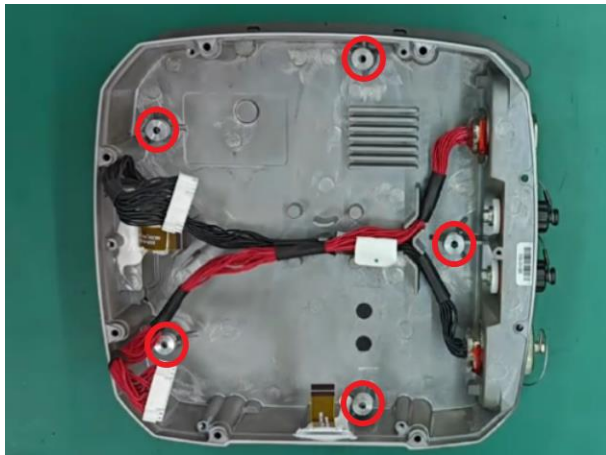
6. Take off the 1.4.3 mainboard from the receiver.



7. Tear off the taped side of the cushion column.



8. And place the 5 cushion column on the holes with the taped side facing down, as shown below.



9. Place the 1.5.0 mainboard on the lower case and tighten the 5 screws.



10. Finally tighten all the screws, reconnect all the cables and finish the mainboard replacement.



CHC Navigation

Building C, 577 Songying Road, Qingpu, District,
201702 Shanghai, China

Tel: +86 21 542 60 273 | Fax: +86 21 649 50 963

Email: sales@chcnav.com | support@chcnav.com

Skype: chc_support

Website: www.chcnav.com